

PART OF THE NE. 1/4, OF SECTION 20, T.6N., R.3W., S.L.B. & M.
SILVERLINE INDUSTRIAL PARK SUBDIVISION

194

TAXING UNIT: 302

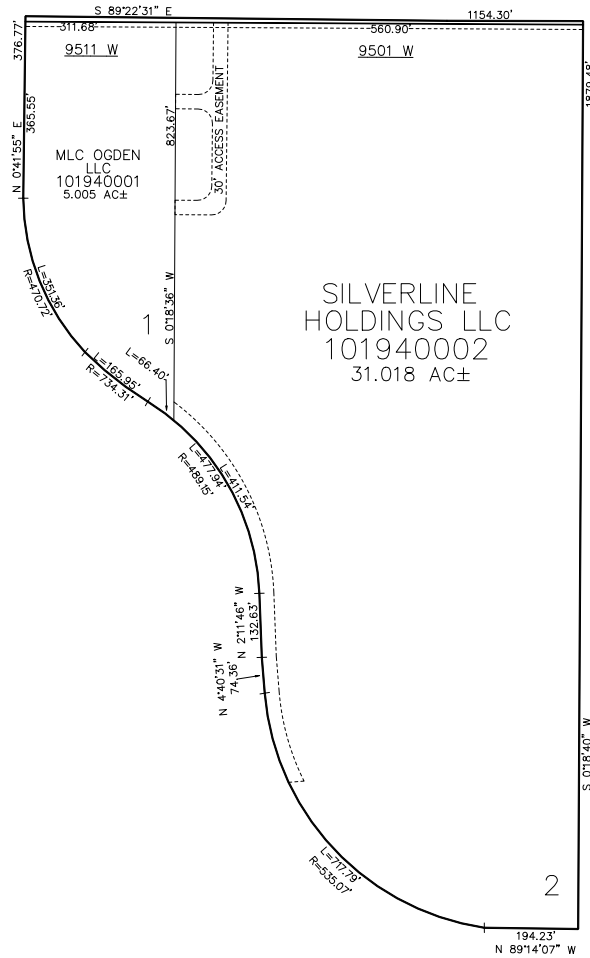
IN WEBER COUNTY
SCALE 1" = 200'

SEE PAGE 41

900 SOUTH

SEE PAGE 41

SEE PAGE 41



10' UTILITY & DRAINAGE EASEMENTS EACH
SIDE OF PROPERTY LINES AS INDICATED
BY DASHED LINES EXCEPT AS OTHERWISE
SHOWN.

FOR COMPLETE SURVEY DATA SEE
ORIGINAL DEDICATION PLAT IN
BOOK 96, PAGE 60 OF RECORDS.